

STROMBOLI - ITALY

Magnify 2022



RECREAR
we observe & we recreate

A residency of human
connection in a
post-pandemic world

OCTOBER 1st - 14th



A pop-up community immersed in nature



The active volcano of Stromboli as a living metaphor of strength, fire, disruption



The island will be our home to recharge, recover, take stock and learn together



What new strategies for adaptation, resilience and change are emerging?



A Participatory Action Learning experience



With a multimedia website to capture the results of this collaborative research.

Are you interested in partnering with us and supporting our programme?

Magnify 2022

At Recrear, we seek to radically reconfigure the way we think about individual and system change so as to value care and expression. Our mission is to co-create knowledge and manifest new realities within ourselves, our communities, and humanity. We craft participatory and interactive processes which allow people, groups and organizations to deepen their awareness, co-develop new understandings and seek collective solutions.

Magnify is a two-week laboratory of personal and collective transformation.

After a two year hiatus due to the pandemic, we are excited to bring together in person a group of artists, activists, civil society leaders and young professionals from all over the world to make sense of how the pandemic has changed our worlds.





We live in a world of uncertainty, deep fractures and increased challenges of inequality. Spaces for organising are shrinking and environmental degradation is on the rise. Yet these last few years might have been unprecedented in the way social movements, organizations, groups and individuals across the whole world had a chance to stop, take stock, think and reorganize. What new solutions, ways of living, philosophies and approaches are emerging?

Magnify 2022 will be held on the volcanic island of Stromboli, Italy, from October 1st to the 14th. In this experience of pop-up community and intercultural learning, together we will delve into the question:

How are we reinventing ourselves to attend to crumbling systems and accompany new beginnings?

What we discover together will be translated into a multimedia page intended as a historical archive, witnessing reflections that express the complexity of this moment in history from the point of view of young leaders, queer and feminists movements, artists, activists and other civil society practitioners.



Magnify 2022

Recrear Magnify is a residency program for those who seek to nourish their creative and reflective selves in a pop-up community immersed in nature. For two weeks, participants find a home to practice living in community - Every edition we come together around a question that invites participants to strengthen their own social practice through collaborative processes, participatory action research, creative expression, collective care, reflective practices and co-creation.

The program is now in its 10th edition and has trained over 120 people from over 25 countries who work as program officers, facilitators, artists, researchers, social entrepreneurs, activists, educators, social communicators and youth development Practitioners.

Magnify2022 will be held on a volcano, in the island of Stromboli. The process will be accompanied by a strong connection with the elements: fire, water, wind and earth. 'Iddu', the nickname the inhabitants of Stromboli use to refer to the active volcano, will be our living metaphor. The volcano embodies strength, fire, disruption - much of the energy many of us have been experiencing over the last two years during the pandemic. We will come together to make sense of how we have been changing and how our generations are coping with crisis and transformation.

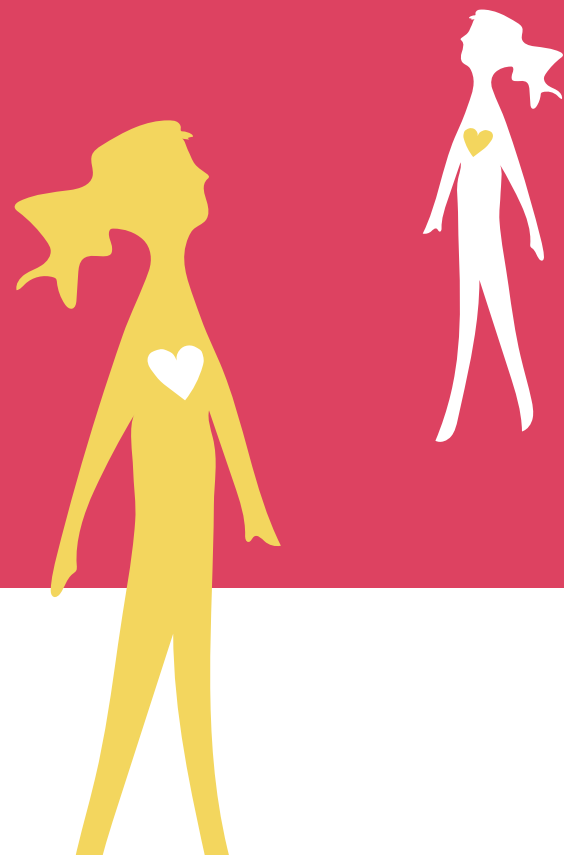
What new strategies for adaptation, resilience and change are emerging?

WHAT'S NEW THIS YEAR



Magnify 2022

Magnify is organised around 3 elements:



Week 1

Personal development course (week 1): a space for participants to become present with themselves and our pop-up community. We'll discover how community experiences are co-created.

Participatory action learning (week 1 and 2): Participants learn and practice through collaborative processes, participatory action research, creative expression, collective care, reflective practices. We will share values, tools and principles to unpack the learning question.

Week 2

Creation (week 2 + follow up virtual gatherings): By week 2 we are consolidating and expressing what we are learning and thinking about how we would like to transmit this with others. Following Magnify we will organise 3 zoom gatherings to translate our learning into a multimedia site.

Total costs of the event

32.000 euros

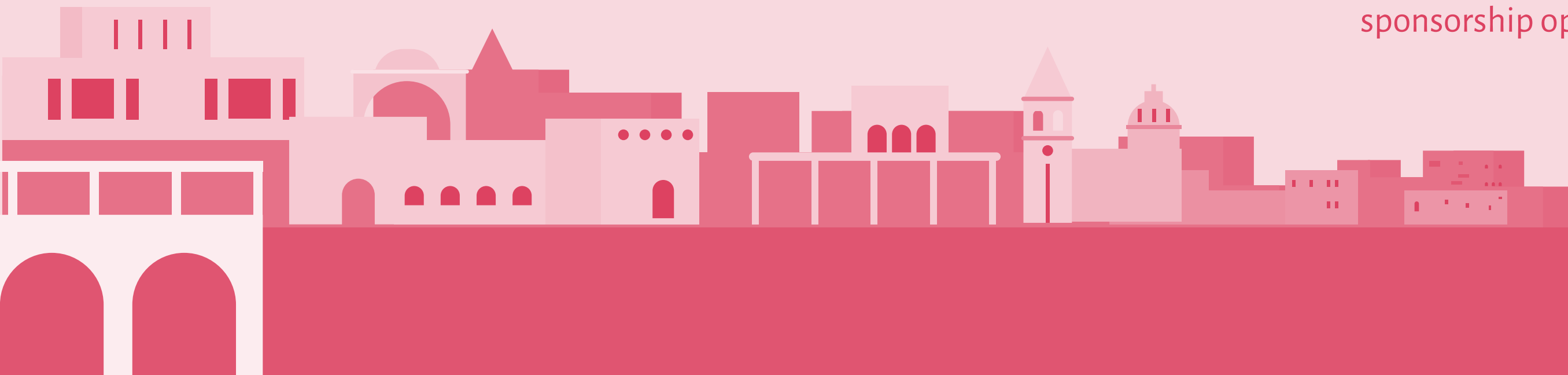
This includes

- Participation costs for 16 people
- The personal development course
- 2 facilitators coordinating the whole programme
- Food and accommodation for the whole group
- Final publication costs

Are you interested in funding Magnify or contributing to cover parts of our budget?

We strive to make Magnify a sustainable and inclusive programme.

We invite you to help us make the programme accessible by considering one of the following sponsorship options.



THIS IS WHAT WE OFFER TO YOU AS A SPONSOR



Magma Pack

up to **5.000** euros:

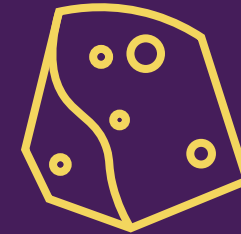
Sponsor one participant or
or invite someone in your
network to participate.



Lava Pack

5.000-10.000 euros

Sponsor two participants or
invite two people in your
network to participate.
Include your logo on the
Magnify2022 website
Social media shout-outs



Lapillo Pack

10.000-20.000 euros

Sponsor three participants
or invite three people in
your network to participate.
Be part of the experience -
two people from your
organization join the last
three days of the program in
Stromboli.



Obsidian Pack

over **20.000** euros

All benefits from Lava pack.
Receive a media kit to
promote the results of
Magnify and make the
interactive website a
flagship program for your
organization.

TESTI MONIALS

“

Recrear Magnify was an extraordinary experience that opened my eyes to so many answers to questions I had working in a non-profit organization that empowers social entrepreneurship in Saudi Arabia.

Participating on behalf of my organization made me realize how I can activate my role and belong to a healthy and alive system. I realized that it is possible to belong to a community and be an individual at the same time.

Abeer Bashatah, Saudi Arabia

“

From Recrear, I gained a new approach to achieving this kind of community-led transformation (...).

It taught us how the issue of community development can be tackled in a closer and more purposeful way that creates long lasting impact. The skill training and personality development workshops moulded us into Participatory Action Researchers. This technique of working or doing things can be applied to communities all over the world. Today, I use the knowledge I gained during Magnify in my daily life - in the professional and the personal.

On top of it all, I connected with such amazing, diverse people that opened my eyes in an entirely new way. I would recommend Recrear to anyone who wants to learn how to make an impact in the world in more beautiful and effective ways.

Mourya, India

“

RecrearMagnify reminded me of periods in my life when I lived with friends. You really get to know people when you see how they wake up, the first thing they do in the morning and before going to bed etc. You see how they are, without judging them. Part of our community process was becoming one. We learned to work in synergy, bringing together different ideas and respecting each other in the process.

Maria Gabriela, Venezuela

ARE YOU INTERESTED IN BECOMING A SPONSOR?

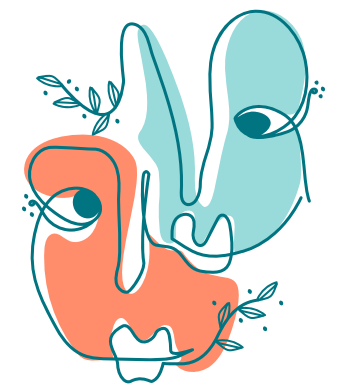
Get in touch with Gioel Gioacchino

gioel@recrear.info

+57 321 7550951

To schedule a chat and ask any additional
questions you might have.

Magnify 2022



RECREAR
we observe & we recreate